



**IX series II**

- AC, DC & AC+DC power source
- 3 kVA-15 kVA, single or 3 phase
- Multifunction instrument
- Drives loads from 0 to 1 power factor
- Arbitrary waveform generation
- Waveform Acquisition Capability
- Power Analysis
- Supports GPIB, RS-232, USB, and LAN

**Lx/Ls Series**

- Programmable AC power source
- 3 kVA - 18 kVA
- Single or three phase output
- Arbitrary waveform generation
- Supports GPIB, RS-232, USB, and LAN



**Compact iX**

- AC & DC power source & power analyzer
- 750 VA to 3000 VA, single/three phase output
- Arbitrary waveform generation
- Power Analysis
- Avionics test software

**P&RP Series**

- Programmable portable power source
- 800 VA to 1250 VA output power
- 16 Hz to 500 Hz frequency range
- High peak current capability
- IEEE-488 & RS-232 interface option
- Analog controls & digital readouts



**EC1000S**

- AC & DC power source & power analyzer
- 750 VA - 1 KVA
- Compact, light, and portable
- Large 5.7 LCD Screen
- Powerful Measurement & Sequencing Features
- USB Interface

**MX Series**

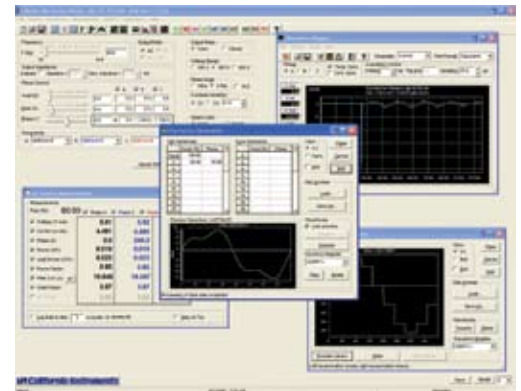
- AC, DC, AC+DC power system
- 15-270 kVA
- Single and/or three phase output
- Power analysis
- Arbitrary waveform generation
- Supports GPIB, RS-232, USB, and LAN
- Constant power mode
- Voltage waveform & distortion programming



**About California Instruments:**

- Design & manufacturing of precision instrumentation products for over forty years
- Equipment built and tested in our modern facility located in the USA
- Strict quality control procedures ensure that all of our products meet or exceed published specifications
- World's leading supplier of controllable precision AC Power Sources used in a Variety of areas; including industrial, military, and commercial test and measurement applications
- Dedicated to total customer satisfaction
- ISO 9001:2000 certified
- Powerful instrument control software and avionics testing capabilities

**Instrument Control Software:**



Windows® Instrument Control Software is included with all of our remotely programmable controllers.\* This software provides easy access to the power source's capabilities without the need to develop any custom code. The following functions are available:

- Steady state output control (all parameters)
- Create, run, save, reload & print transient programs
- Generate & save harmonic waveforms
- Generate & save arbitrary waveforms
- Download data from a digital storage oscilloscope
- Measure & log standard measurements
- Capture & display output voltage & current waveforms
- Measure, display, print & log harmonic voltage and current measurements
- Run IEC test programs
- Display IEEE-488 or RS232C bus traffic to & from the AC Source to help you develop your own test programs.

\* Requires PC running Windows Vista™, Windows XP™, or Windows 2000™



### CTS Series

- Supplied with iX Series II or MX Series controller and powerful Instrument Control Software
- Test equipment to perform the following IEC test specifications:
  - EN/IEC 61000-3-2: harmonics, including A14
  - EN/IEC 61000-3-12: Harmonics - high power
  - EN/IEC 61000-3-3: flicker, amendment 1
  - EN/IEC 61000-3-11: flicker measurement
  - EN 61000-4-11: voltage dips & interruptions
  - EN 61000-4-13: harmonics & interharmonics
  - EN 61000-4-(14, 17, 27, 28, 29):
  - Programmable software package
  - 1 & 3 Phase configurations available



### FCS Series II

- Easy to Program: Uses front panel keyboard display with full decimal keypad for data entry
- Single or Three Phase Operation
- Ideally suited for avionics and defense applications
- Arbitrary Waveform Capability
- Performs voltage and load current harmonic analysis and waveform acquisition
- Connects via RS-232, USB, LAN, and GPIB remote control interfaces for ATE system integration included



### TL Series

- Programmable 45 Hz to 8000 Hz
- Dual voltage ranges
- Standard current measurement
- Optional measurements for peak current, voltage, real power, apparent power, power factor & crest factor (with option -OP1)
- Optional IEEE-488 & RS232C



### LD Series

- Multi-mode AC electronic load
- 3000 watt power dissipation
- Master / Aux configurations (1 or 3 Phase)
- 50 to 350 V, 45 Hz to 440 Hz
- Programmable crest & power factor
- Built-in measurements
- IEEE-488 & RS232C Interface



### CS Series

- Precision current source
- Single & Three phase mode
- 3 kVA to 18 kVA power levels
- Real-world current profiles
- Built-in power analyzer
- Standard IEEE-448, USB & RS232C



### Argantix DC Line

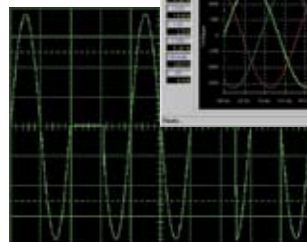
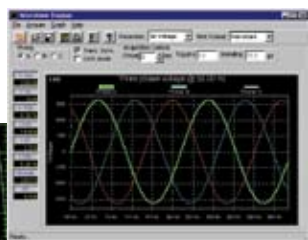
- Built-in transient programming
- 5 kW to 90 kW
- User selectable operating modes (CC, CV, CP)
- Digitized waveform measurements.
- Paralleling mode of multiple units.

## Avionics Instruments Control Software (ICS) & Transient Generation System:

Our controllers are equipped with powerful AC & DC transient generation system that allows complex sequences of voltage, frequency & waveshapes to be generated. This further enhances the power source's capability to simulate AC line conditions or DC disturbances. When combined with the multi phase arbitrary waveform capabilities, the AC & DC output possibilities are truly exceptional. In three phase system configurations, transient generation is controlled independently yet time synchronized on all three phases. Accurate phase angle control & synchronized transient list execution provide unparalleled accuracy in positioning AC output events.



Transient List Data Entry in ICS.



Acquired three phase voltage waveforms display on PC.

### Equipment Software Chart

		Revision	iX Series II	Compact iX	MX Series	Lx/Ls Series
<b>MIL-STD704</b>	AC Mode	A, B, C	-704 (CIGuiSII)	-704 (iXCGui)	-704 (MXGui)	-704F
		D, E	-704	-704	-704	-704 or -704F
		F	-704 (CIGuiSII)	-704 (iXCGui)	-704 (MXGui)	-704F
	DC Mode	A, B, C, F	-704 (CIGuiSII)	-704 (iXCGui)	-704 (MXGui)	
D, E		-704	-704	-704		
<b>RTCA-DO160</b>	AC Mode	C	N/A	N/A	N/A	-160
		D	-160	-160	-160	-160
		Euro/14D	-160	-160	-160	-160
		Chng 2	N/A	N/A	N/A	-160
		E	-160 (CIGuiSII)	-160 (iXCGui)	-160 (MXGui)	-160 (LxGui)
	DC Mode	C	N/A	N/A	N/A	
		D	-160	-160	-160	
		Euro/14D	-160	-160	-160	
	Chng 2	N/A	N/A	N/A		
	E	-160 (CIGuiSII)	-160 (iXCGui)	-160 (MXGui)		
<b>787B3-0147</b>	AC Mode	A, B, C	-787 (CIGuiSII)	-787 (iXCGui)	-787 (MXGui)	-787 (LxGui)
	DC Mode	A, B, C	-787 (CIGuiSII)	-787 (iXCGui)	-787 (MXGui)	
<b>ABD0100.1.8 (A380)</b>	AC Mode	D, E	-ABD (CIGuiSII)	-ABD (iXCGui)	-ABD (MXGui)	-ABD (LxGui)
	DC Mode	D, E	-ABD (CIGuiSII)	-ABD (iXCGui)	-ABD (MXGui)	
<b>ABD0100.1.8.1 (A350)</b>	AC Mode	B	-ABD (CIGuiSII)	-ABD (iXCGui)	-ABD (MXGui)	-ABD (LxGui)
	DC Mode	B	-ABD (CIGuiSII)	-ABD (iXCGui)	-ABD (MXGui)	